

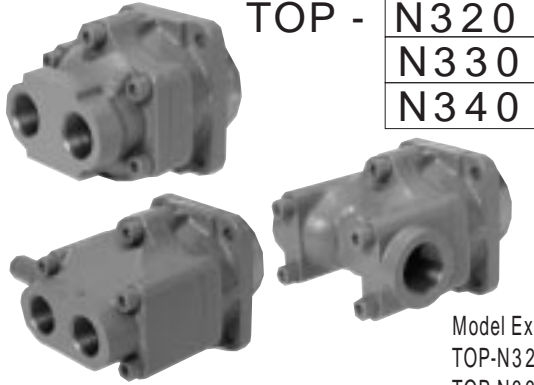
# TOP-N3F

## Specifications

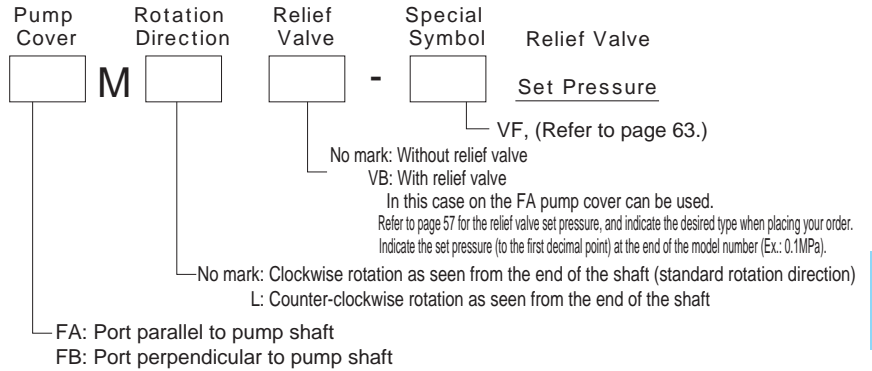
Model	Item	Theoretical Displacement cm <sup>3</sup> /rev	Theoretical Discharge ℓ/min		Max. Discharge Pressure MPa	Max. Revolution min <sup>-1</sup>	Approx. Weight kg
			1500min <sup>-1</sup>	1800min <sup>-1</sup>			
TOP-N320	FAM	26	39.0	46.8	2.5	1800	8.0
	FAMVB						10.5
	FBM						9.0
TOP-N330	FAM	39	58.5	70.2	2.5	1800	8.0
	FAMVB						10.5
	FBM						9.0
TOP-N340	FAM	52	78.0	93.6	2.0	1800	8.0
	FAMVB						10.5
	FBM						9.0

The above maximum discharge and maximum revolution values are for when using ISO-VG46 oil with an oil temperature of 40 °C.

## Model



TOP - **N320**  
**N330**  
**N340**



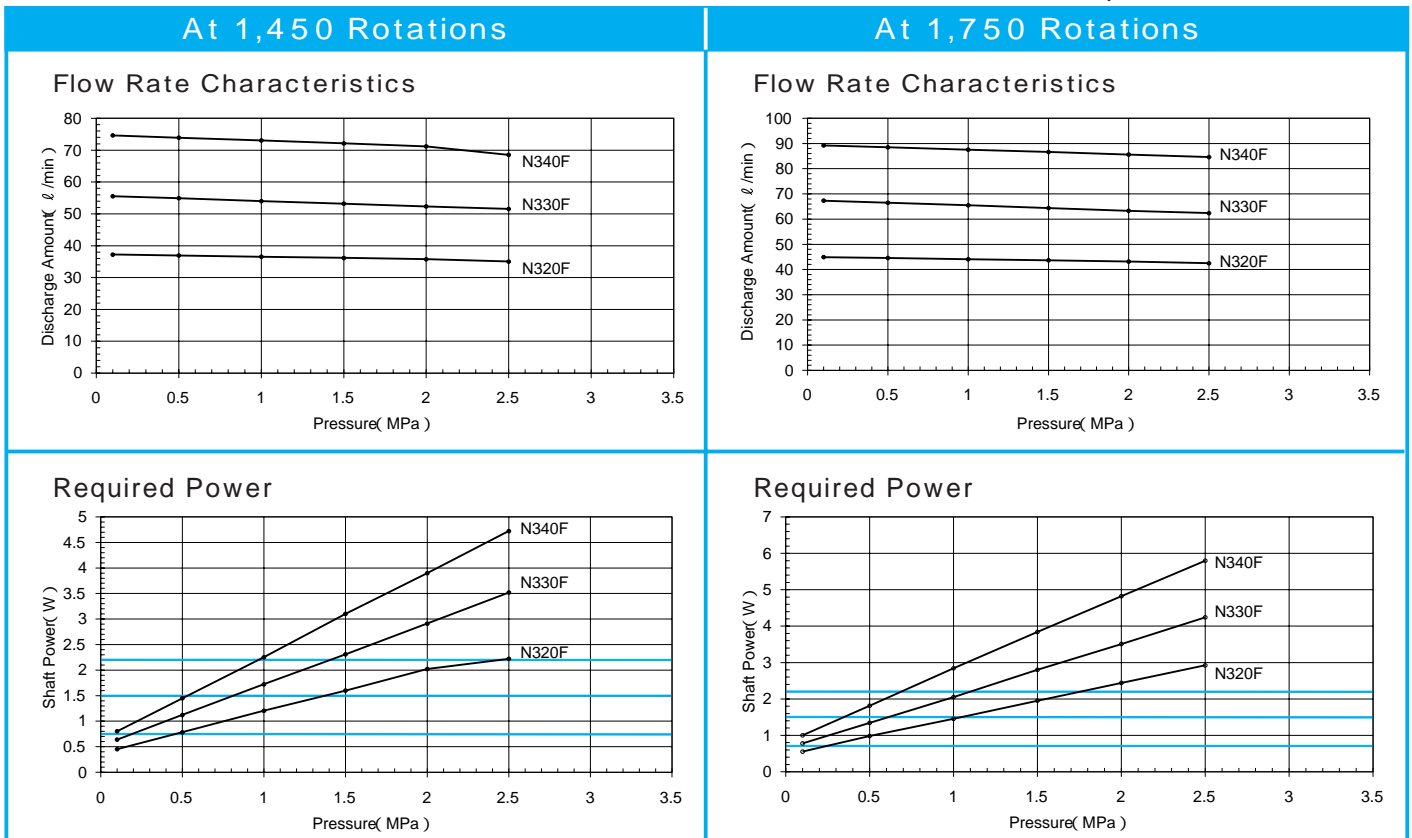
Model Examples:

TOP-N320FAMLVB (port parallel to pump shaft, with relief valve)

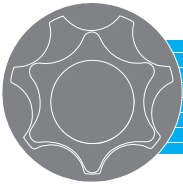
TOP-N330FBML (port perpendicular to pump shaft, counter-clockwise rotation as seen from end of shaft)

## Performance Table

Test Conditions Oil: ISO-VG46 with a temperature of 40 °C



Select the best motor using the lines in the "Required Power" table as the applicable standards.

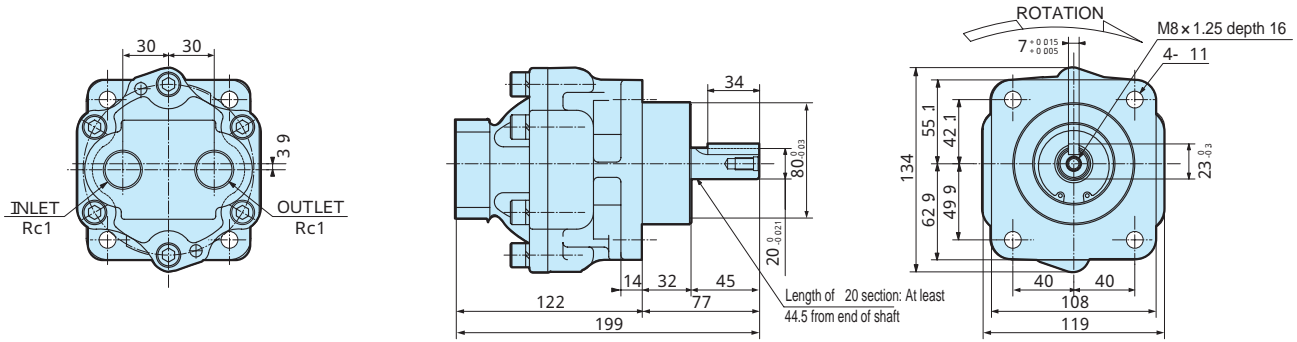


# TOP-N3F

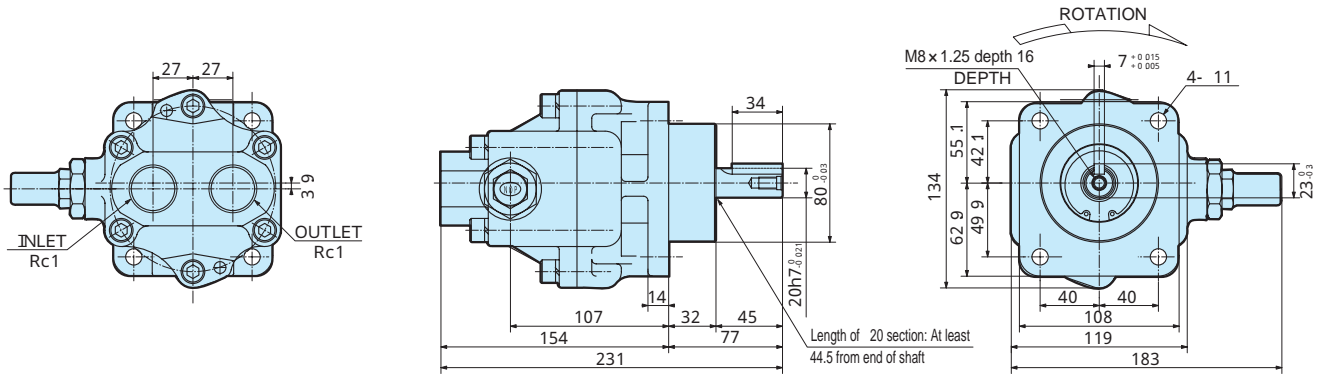
## Dimensional Diagrams

Be sure to check the Nippon Oil Pump homepage for the most up-to-date diagrams and dimensions.

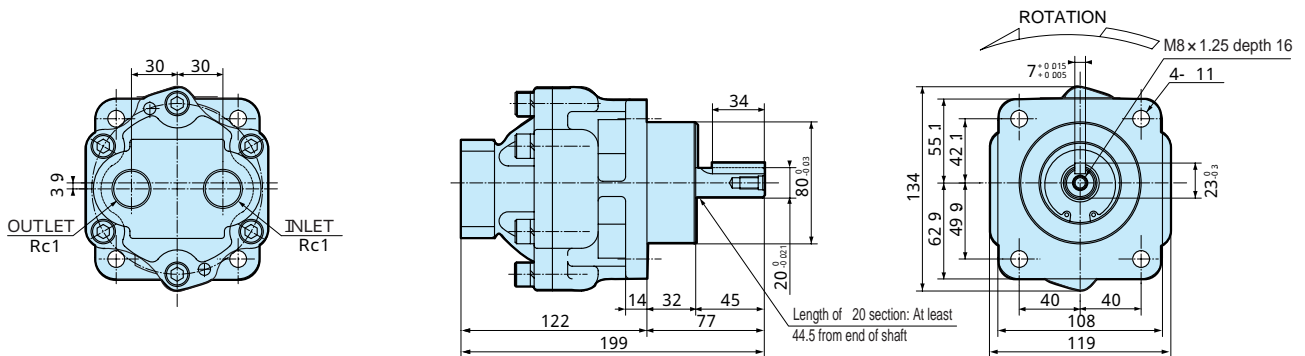
Model : TOP - N3FAM



Model : TOP - N3FAMVB



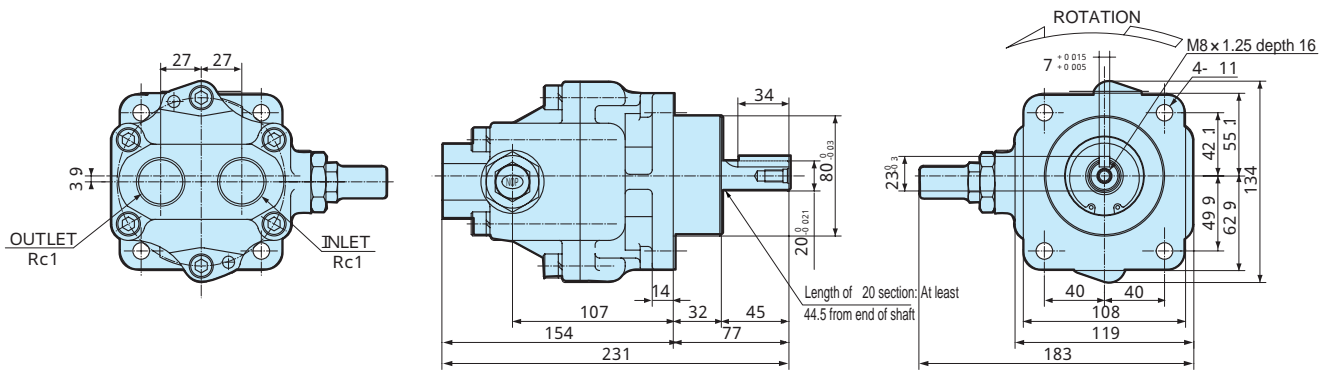
Model : TOP - N3FAML



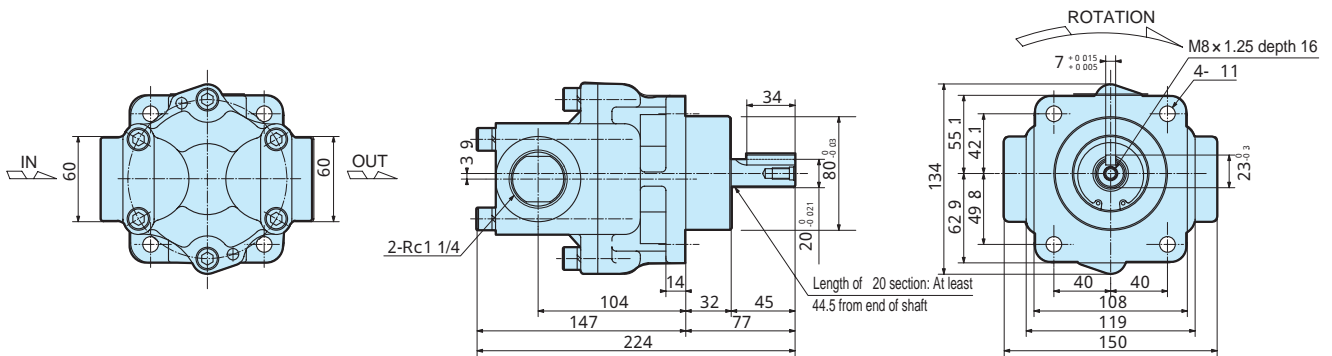
# Dimensional Diagrams

Be sure to check the Nippon Oil Pump homepage for the most up-to-date diagrams and dimensions.

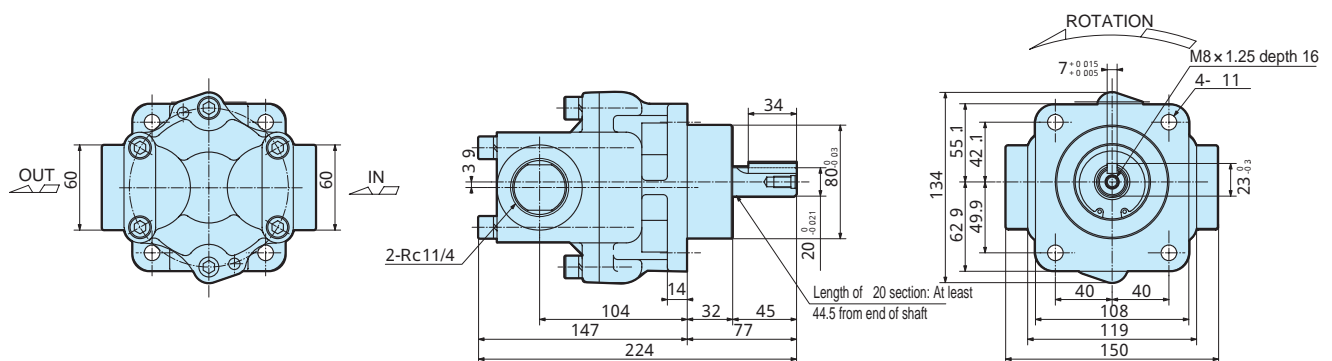
## Model : TOP - N3FAMLVB



## Model : TOP - N3FBM



## Model : TOP - N3FBML



N3F