

Lunary Pump (GPL)

Used for transferring oils with high viscosity (46 ~ 2,000mm²/sec) such as high-viscosity lubricating oils and gear oils.

Specifications

Model	Item	Theoretical Displacement cm ³ /rev	Theoretical Discharge ℓ/min		Max. Discharge Pressure		Max. Revolution min ⁻¹	Approx. Weight kg
			1000min ⁻¹	1200min ⁻¹	Normal MPa	Max. MPa		
GPL-150VB		150	150	180	1.0	2.0	1800	38.9
GPL-200VB		200	200	240	1.0	2.0	1800	40.3
GPL-250VB		250	250	300	1.0	2.0	1800	42.5

The above maximum discharge and maximum revolution values are for when using ISO-VG46 oil with an oil temperature of 40 °C.

*Please consult with your Nippon Oil Pump representative before using the specifications marked with " ".

Model



GPL -

150
200
250

Attachment



Rotation Direction



Relief Valve

VB

No mark: Clockwise rotation as seen from the end of the shaft (standard rotation direction)
L: Counter-clockwise rotation as seen from the end of the shaft

I : With angle plate
F: Without angle plate

Model Examples:

GPL-150IVB (with angle plate)

GPL-150FLVB (without angle plate, counter-clockwise rotation seen from end of shaft)

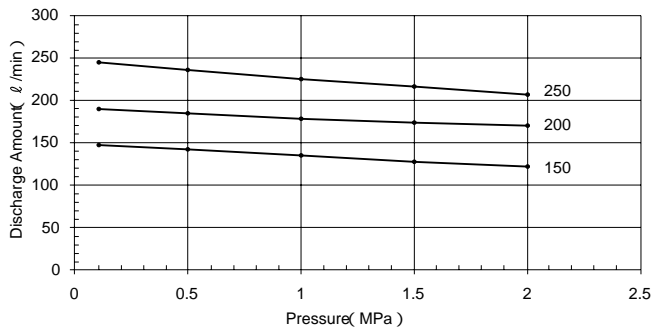
Performance Table

Test Conditions Oil: ISO-VG46 with a temperature of 40 °C

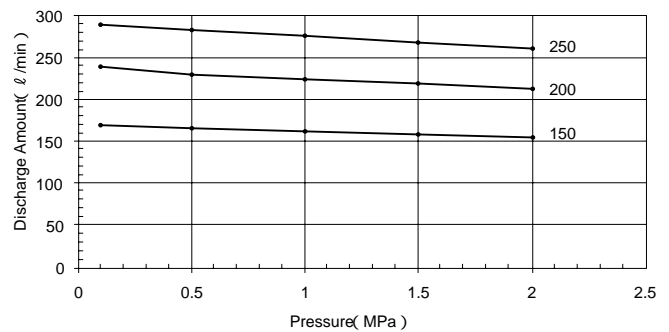
At 960 Rotations

At 1,160 Rotations

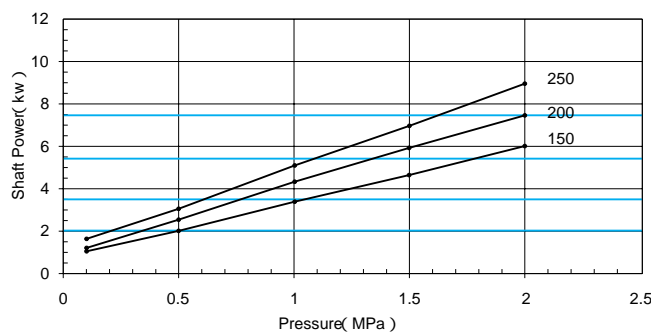
Flow Rate Characteristics



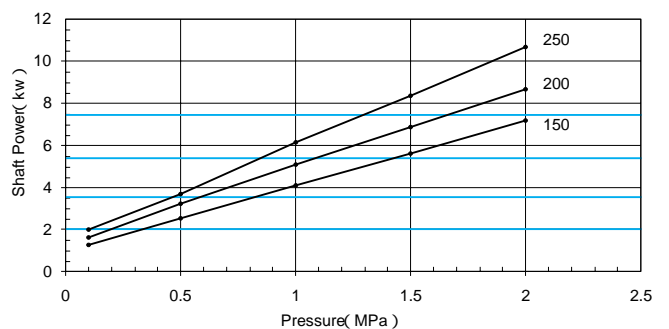
Flow Rate Characteristics



Required Power



Required Power

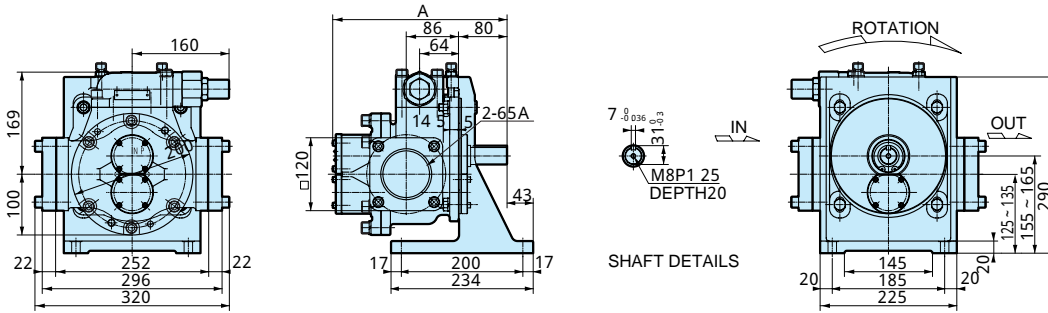


Select the best motor using the lines in the "Required Power" table as the applicable standards.

Dimensional Diagrams

Be sure to check the Nippon Oil Pump homepage for the most up-to-date diagrams and dimensions.

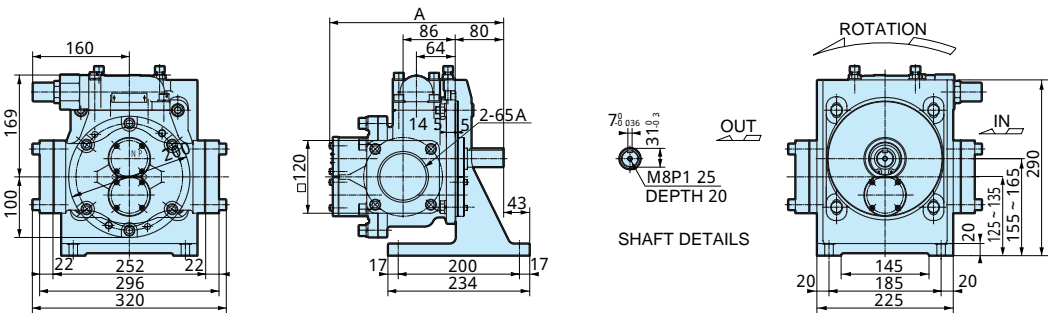
Model : GPL - IVB



Dimensions

Model	Item	A
GPL-150IVB		268
GPL-200IVB		287
GPL-250IVB		306

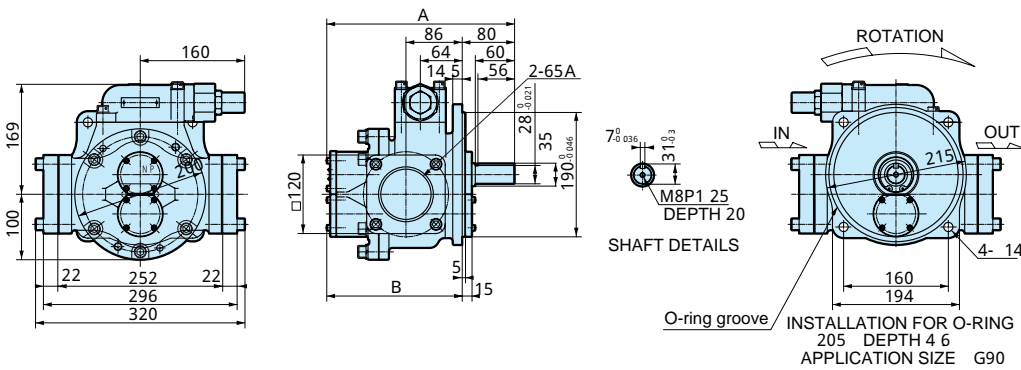
Model : GPL - ILVB



Dimensions

Model	Item	A
GPL-150ILVB		268
GPL-200ILVB		287
GPL-250ILVB		306

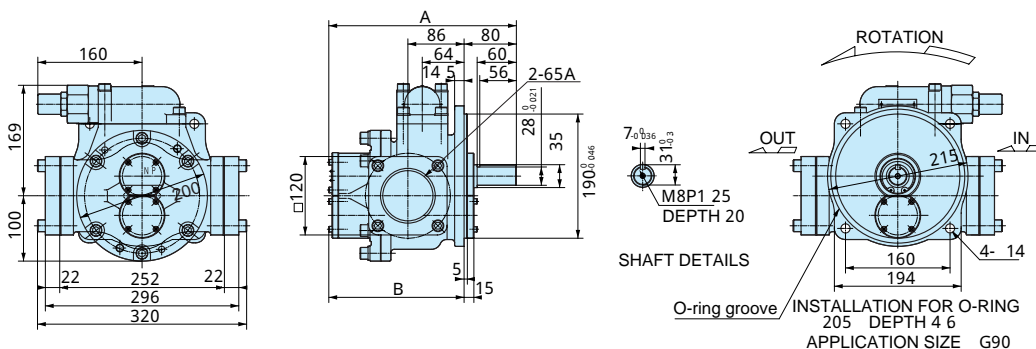
Model : GPL - FVB



Dimensions

Model	Item	A	B
GPL-150FVB		268	188
GPL-200FVB		287	207
GPL-250FVB		306	226

Model : GPL - FLVB



Dimensions

Model	Item	A	B
GPL-150FLVB		268	188
GPL-200FLVB		287	207
GPL-250FLVB		306	226